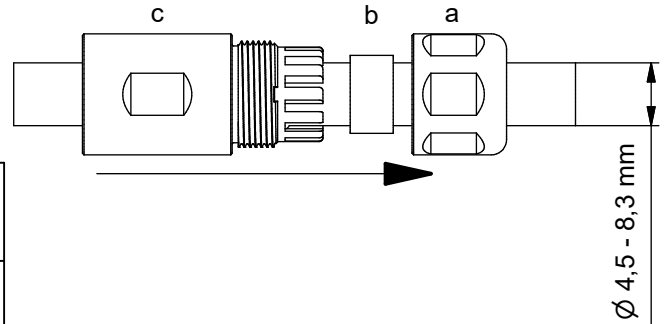


1

Klemmmutter [a], Kabeldichtung [b]*, und Gehäuse [c] auf das Kabel schieben

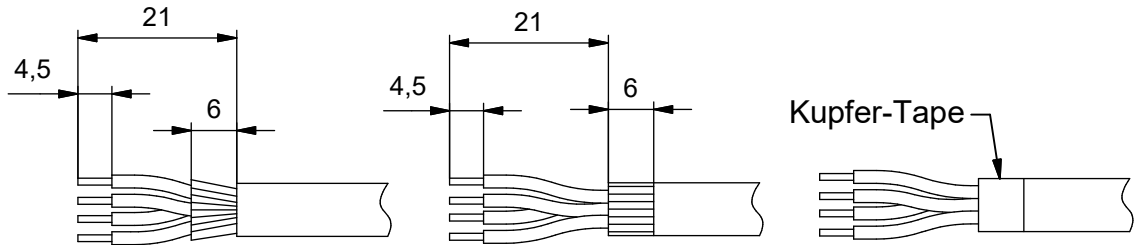


*

Kabel Dichtung			
Kabel Aussendurchmesser [mm]	4,5 - 5,0	5,0 - 7,0	7,0 - 8,3

2

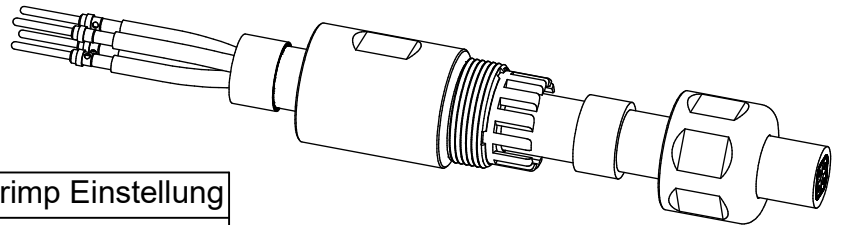
abmanteln
 abisolieren



Schirm kürzen, auf Kabelmantel umschlagen und mit Kupfer-Tape umwickeln

3

Kontakte ancrimpen mit
 Werkzeug: 360X10329X
 Einstellungen: siehe Tabelle



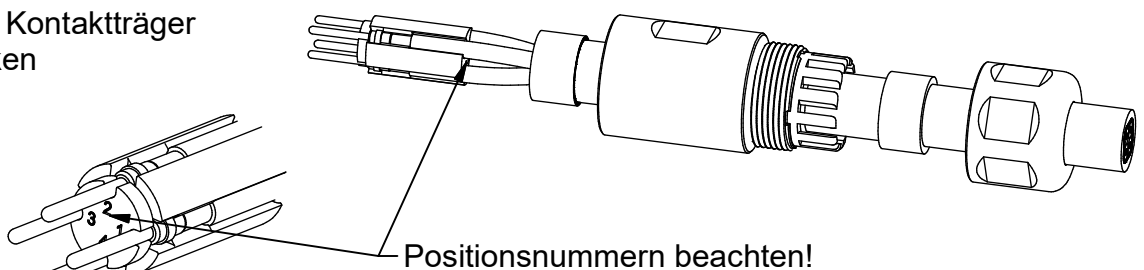
Litzenquerschnitt	Crimp Einsatz	Crimp Einstellung
0,22 mm ² - 0,5 mm ² AWG 24 - AWG 20	360X20039X	7 für AWG 20 6 für AWG 22 5 für AWG 24
0,34 mm ² - 1,0 mm ² AWG 22 - AWG 18	360X20069X	6 für AWG 18 6 für AWG 20 5 für AWG 22

4

Kontakte in den Kontaktträger
 seitlich eindrücken

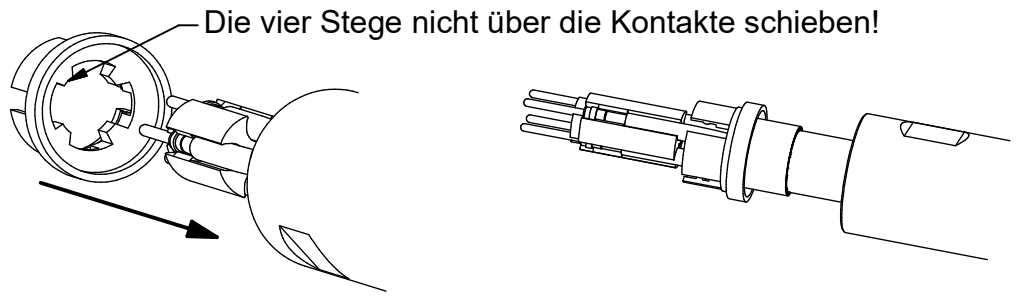


Achtung Codierung!



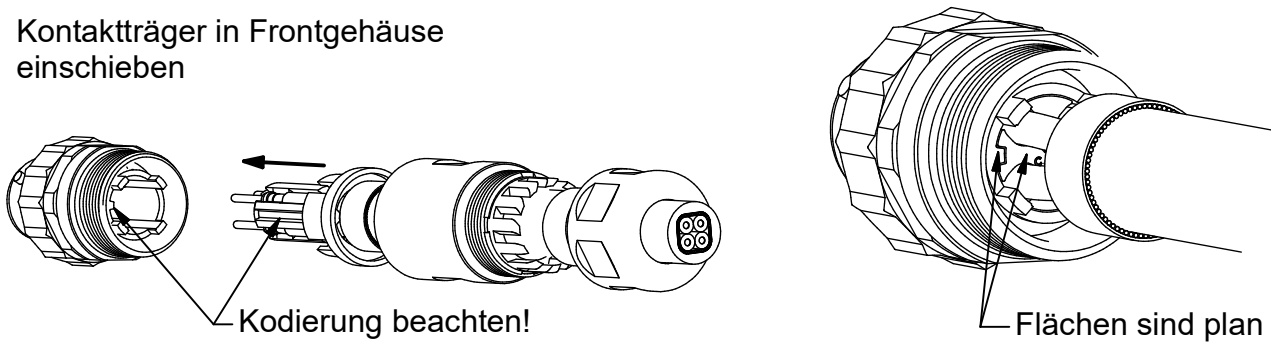
5

Befestigungseinsatz
 über den Kontaktträger
 schieben



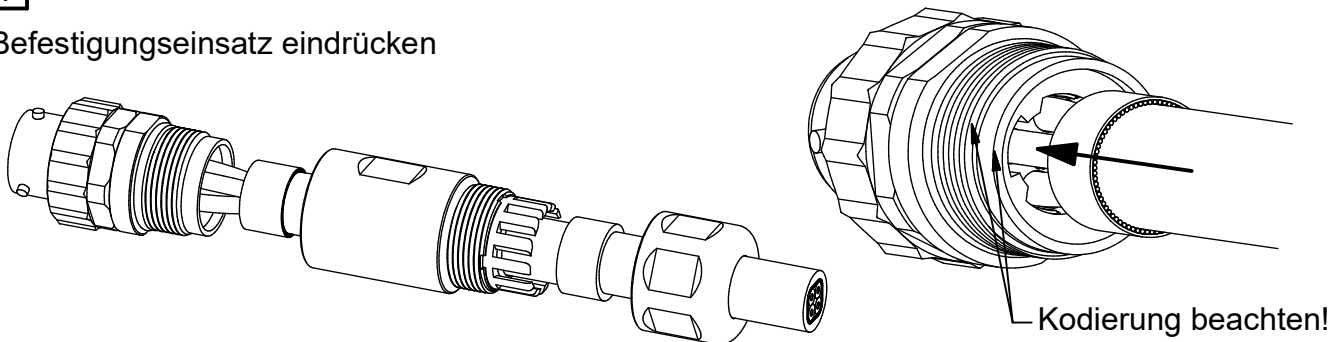
6

Kontaktträger in Frontgehäuse
 einschieben



7

Befestigungseinsatz eindrücken

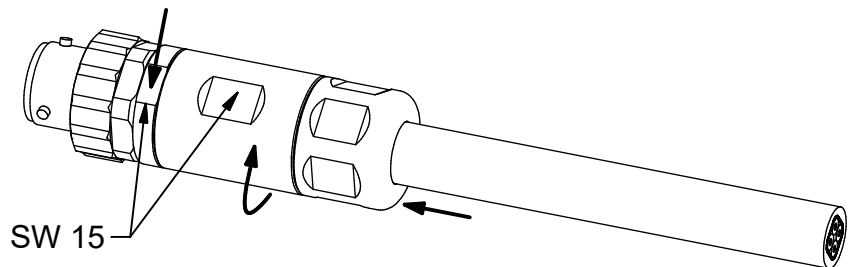


8

Gehäuse bis auf Anschlag
 anschrauben

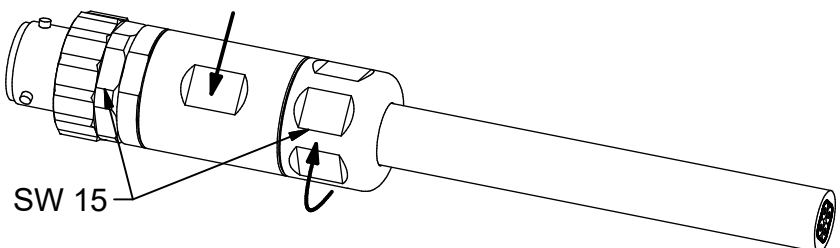
Conec Werkzeug:
 36-000200
 36-000320 für SW15

und Kabeldichtung in den
 Kabelkäfig schieben



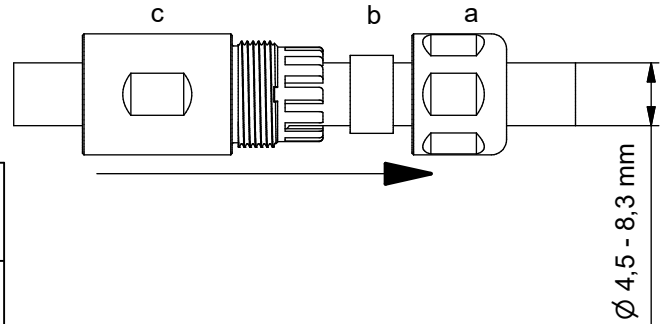
9

Klemmmutter mit
 mit min. 100 Ncm verschrauben



1

pull gland [a], cable seal [b]*, and housing [c] on the cable

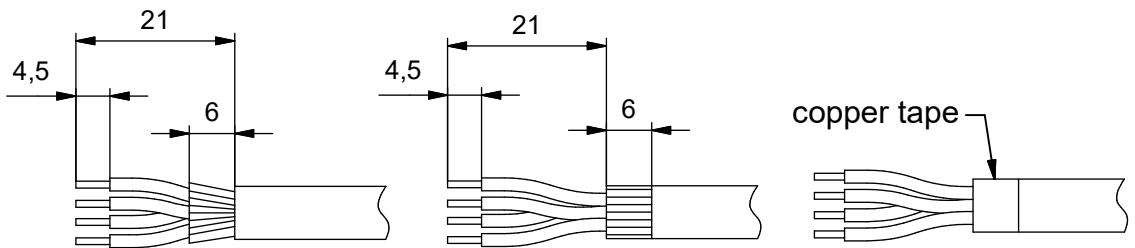


*

cable seal			
cable outer diameter [mm]	4,5 - 5,0	5,0 - 7,0	7,0 - 8,3

2

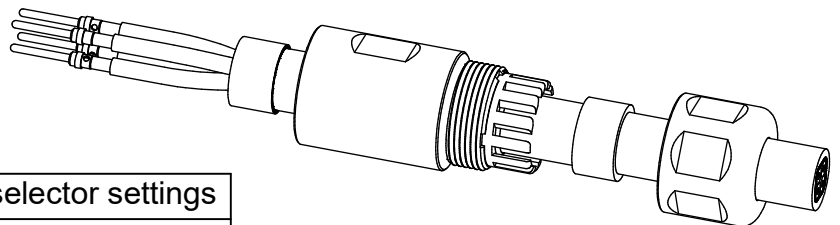
strip cable as shown in the drawing



shorten braided shield, turn it over the cable jacket and wrap it with copper tape

3

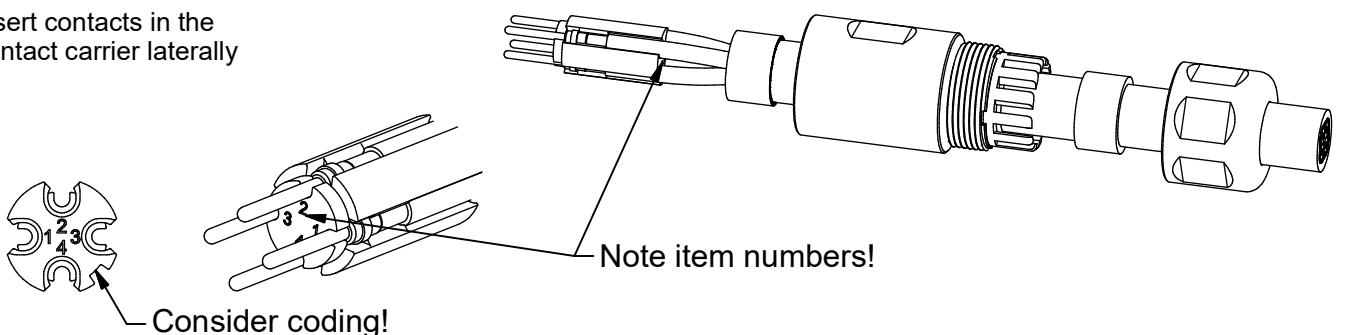
crimp contacts with tool: 360X10329X
 settings: see table



wire cross section	tool insert	selector settings
0,22 mm ² - 0,5 mm ² AWG 24 - AWG 20	360X20039X	7 for AWG 20 6 for AWG 22 5 for AWG 24
0,34 mm ² - 1,0 mm ² AWG 22 - AWG 18	360X20069X	6 for AWG 18 6 for AWG 20 5 for AWG 22

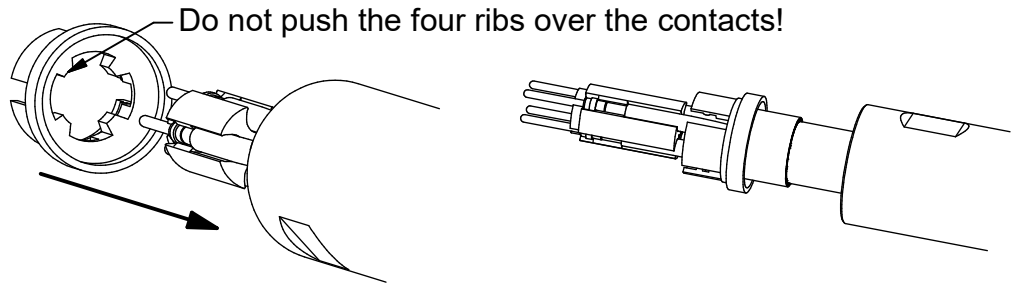
4

insert contacts in the contact carrier laterally



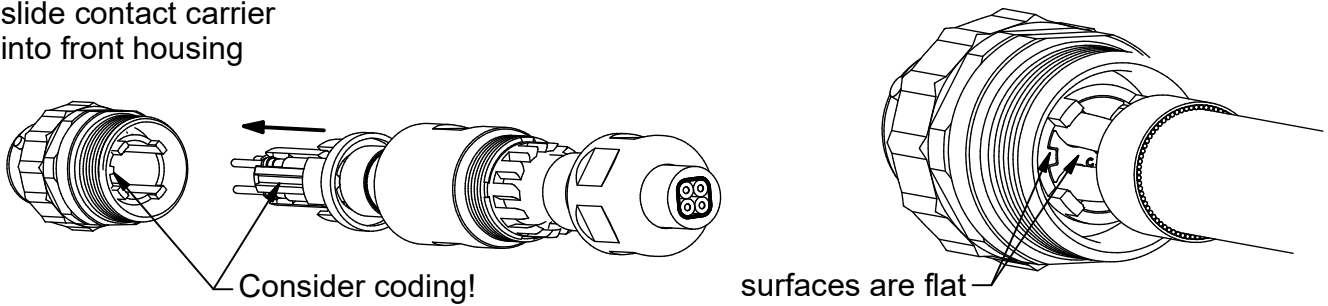
5

slide insert over the contact carrier



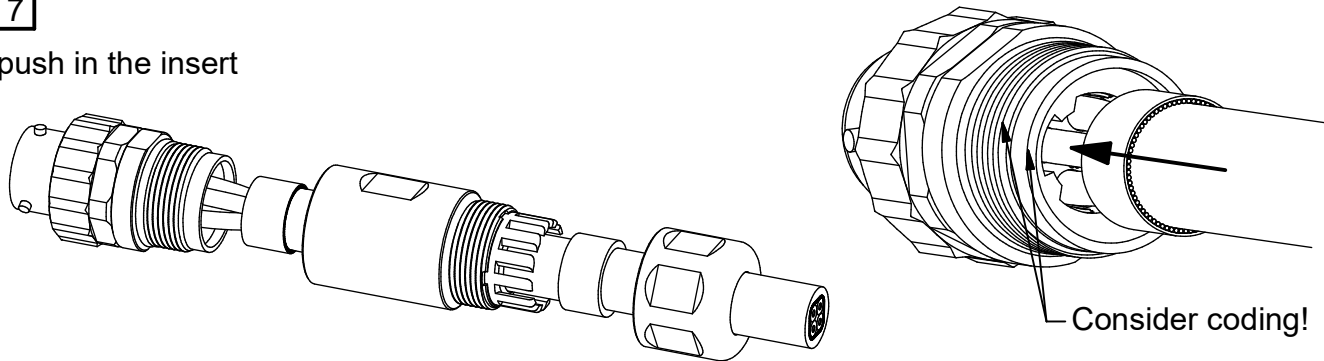
6

slide contact carrier into front housing



7

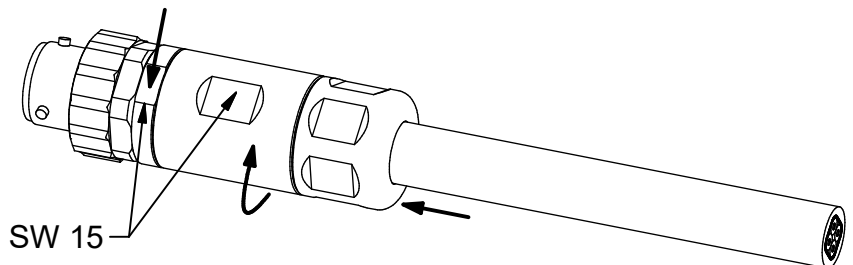
push in the insert



8

screw housing [c] until it stops
 Conec tool:
 36-000200
 36-000320 for SW15

push cable seal [b] into the cable cage



9

tighten gland to a torque of min. 100 Ncm

